



BETON COVER

Arman Sazeh Alamoot

Specialized Producer of Building Chemicals
Plastic Spacers and PVC Waterstops



Superplasticizer

Plastit PCN300
Plastit PCR300
Plastit PCA300
Plastit SR10
Plastit SN

With a considerable reduction of water-to-cement ratio, superplasticizers increase applicability and consistency of concrete without bleeding and separation of gravels, facilitate cement mortar pumping without need for vibration, reduce permeability of harmful ions such as chloride and sulfate ions increase cohesion between concrete and reinforcement and play a key role in ultimate strength increased slump and concrete consistency.

These additives are produced in three types of natural, late-setting and fast-setting superplasticizers.

Superplasticizer

PNN200
PNR200
PNA200
PMR
PZ4

Superplasticizers are used to produce high-performance concrete with high slump. This type of superplasticizer also reduces water-to-cement ratio in a same rheology, increases initial strength of concrete and also compaction and consistency of concrete, increases concrete durability due to lower water consumption, facilitates pumping without bleeding and separation of gravels.

These additives are produced in three types of natural, late-setting and fast-setting superplasticizers.

Plasticizer

PLN100
PLR100
PLA100
PLR
PLB

Plasticizers are used to produce high-performance concrete with high slump. This type of plasticizer also reduces water-to-cement ratio in a same rheology, increases initial strength of concrete and also compaction and consistency of concrete, increases concrete durability due to lower water consumption, facilitates pumping without bleeding and separation of gravels, decreases cracks caused by concrete shrinkage and reduces permeability of concrete.

This additive is produced in three types of natural, late-setting and fast-setting plasticizer.

Microsilica Gel

JS480
JS600
JS650
JS700
JS800

This additive is produced as a concentrate slurry with pozzolanic properties. Microsilica gel is used to produce a concrete with high compressive and flexural strength. Adding this product to the concrete formulation reduces concrete permeability while increases its durability and stability. The product of this reaction causes an increase in the compaction and thereby durability of concrete.

This product is manufactured in different types, namely normal and fiber-containing microsilica gels.

Antifreeze

Plain concrete IH-M
Reinforced concrete IH-C

With increasing hydration reaction rate, this product increases initial setting of concrete. It allows concreting operation in cold weather with decreasing freezing point of water. This product is manufactured in two types: with chloride (liquid and powder) for plain concrete and chloride-free for reinforced concrete.

Air Entrainment

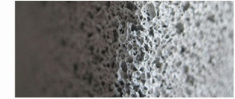
CA100

The use of this additive increases concrete resistance against stresses caused by expansion and contraction due to melting and freezing of water and swelling caused by reaction of alkaline materials. It is useful in mixtures with inappropriate grading of gravels in which there is a risk of bleeding and separation.

Shotcrete

Powder SHOT-P
Liquid SHOT-L

Shotcrete increases strength and reduces the time for initial setting of concrete. Calcium hydroxide released during cement hydration is a weak phase susceptible to corrosion. Insoluble calcium carbonate is formed by adding shotcrete to concrete. This substance is hardened leading to an increase in the strength of concrete and mortar.



Concrete additive

Rebar Planting Paste

3-Part EPL 300

This substance is used for planting rebars on the floor of concrete structures. With very high adhesiveness, this additive allows insertion of other pieces such as steel components in the structure.

Waterproof Strength Concrete Adhesive

G70 / G60

This product is a homogenous concentrate polymeric emulsion based on polyvinyl acetate resins. This additive is used to increase mortar adhesion or to attach a new concrete layer on an old layer to repair this layer and also for waterproofing of structures. In addition of adhesion, this substance also increases consistency and integrity of concrete texture.

Concrete Repair Mortar

RP N500
RP S800

This additive is used for repairing damaged surfaces, filling fine pores and increasing compressive and flexural strength of concrete. Other advantages include good adhesion and lack of shrinkage to subsurfaces.



Concrete improvement and repair

Concrete Hardener

BL 200 / GN 200
GY 100 / R 200

Cement hardener is a ready-to-use mixture in various colors for surface hardening. This flooring additive with very high adhesion to various kinds of surfaces and very high strength is suitable for flooring, which allows surface hardening with high durability.



Flooring

Grout

Ready-to-use GRT R100
Expansive GRT D300

A homogenous fluid mortar with high compressive strength without shrinkage is obtained by mixing this grout with water. Controlled expansion of this grout allows effective filling of gaps between concrete and steel .



Epoxy Grout

GRT E200

This grout with very high mechanical strength (compressive, tensile and flexural) is used in industrial structures and installation of equipment, heavy machinery and in general structures exposed to vibration and pressure .



Immobilization

Concrete Waterproof

Powder WP P800
Liquid WP L800

By adding concrete waterproof, water consumption is reduced, agglomeration of particles is prevented and a more compacted concrete is produced. This type of concrete is impermeable against water chemicals and sulfate and is also stable under various weather conditions .



Façade Waterproof

WP700
WP750

Façade waterproof is a kind of diffuser for waterproofing and reducing water permeability through eliminating adsorption. This colorless substance with façade appearance protects the surface against diffusion of water and atmospheric gases by creating a uniform coating and diffusing into capillary tubes .



Fast-Setting Concrete Mix

WF600

Fast-setting mix is converted to a paste after mixing with water and accelerates initial setting with increasing hydration reaction rate. This product is suitable for blocking high-pressure leakages .



Polymeric Sealant

2-Part CA400

This 2-part product is used to prevent water diffusion (penetration) into concrete. This additive adheres on various surfaces such as concrete and metal surfaces and provides a good coating for preventing evaporation and protecting drinking water pipes and tanks and also concrete water reservoirs .



Sealant

Special Tile & Ceramic Powder Adhesive

Powder tile adhesive with good flexibility and high performance can be used for installing various kinds of tiles on floor. The special type of this product is used for waterproofing .



Joining Powder

PG400

This substance based on cement and chemical additives is used as a filler for tight bonding between tiles. Due to the presence of waterproofing polymeric adhesives in its formulation, it provides strong adhesion to surfaces and creates an impermeable surface .



Tile and Ceramic

Emulsion Insulator

PWB1400
POB2000

Oil-based and water-based emulsion insulators are concentrate liquids which are applied in pure form or can be respectively diluted with oil or water. After application, water is evaporated and a water-insoluble flexible resisting layer is formed. Emulsion insulator is a kind of moisture insulator without need for heating .



White Roof Insulator

WE 100

This insulating substance is suitable for sealing cement, mosaic, metal and wood surfaces and is used for insulating bathrooms, roofs and water channels and tanks. Due to white color, this white insulator is resistant against solar radiation. It is also quickly applied to all kinds of surfaces due to flexibility .



Pond Paint

DC 80

Pond paint is an efficient water-based product based on acrylic resins with good sealant properties. By filling capillary cracks in substrate, it creates a uniform coating for isolation of surfaces which are constantly exposed to water and moisture .



Coating

Mould oil

Oil-based GO500
Water-based WO600

Mould oil is used for easier release of concrete from moulds and to prevent concrete adhesion to moulds .



Maintenance

Minifix

The use of 4 minifixes with a special geometry per unit area increases strength against point loading in the range of 70 to 160 kg. This type of spacer is used for lightweight structures.

Model	Concrete coating	Rebar thickness	Quantity in box
Minifix 30	30 mm	6-18 mm	1000
Minifix 40	40 mm	6-18 mm	1000
Minifix 50	50 mm	6-18 mm	1000



Maxifix

Maxifixes are suitable for rebars #8 to #20. One maxifix per each 30 cm of beams and slabs and 4 maxifixes per unit area (1 m2) are recommended for flooring.

Model	Concrete coating	Rebar thickness	Quantity in box
Maxifix 30	30 mm	8-20 mm	500
Maxifix 40	40 mm	8-20 mm	500
Maxifix 50	50 mm	8-20 mm	500
Maxifix 75	75 mm	8-20 mm	300



Hardfix Flatfix

This spacer with different sizes is suitable for creating a 30 mm to 100 mm concrete coating. Four spacers per unit area (1 m2) are recommended to be used in raft foundations (raft footings) and 1 (spacer per 50 cm of strip foundations (strip footings).

Model	Concrete coating	Rebar thickness	Quantity in box
Hardfix 30	30 mm	8-32 mm	500
Hardfix 40	40 mm	8-32 mm	500
Hardfix 50	50 mm	8-32 mm	500
Hardfix 75	75 mm	8-32 mm	300
Hardfix 100	100 mm	8-32 mm	200
Flatfix	20 mm	6-18 mm	1000



Doublefix

Different sizes of this product allows creation of 25 to 40 mm concrete coating at low meshes and 40 to 120 mm at high meshes. Doublefixes can be used at 50 cm intervals.

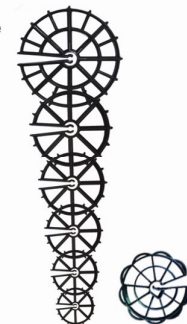
Model	Concrete coating	Rebar thickness	Quantity in box
Head 90	90 mm	8-16 mm	400
Head 100	100 mm	8-16 mm	400
Head 120	120 mm	8-16 mm	400
Head 130	130 mm	8-16 mm	400
Head 150	150 mm	8-16 mm	200
Base	30 mm	8-16 mm	200



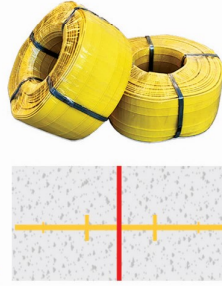
Wheelfix

This spacer with different sizes creates 15 to 100 concrete coating. A total number of 16 spacer are recommended to be used in each 3 m column in two 8-spacer transverse rows on stirrups. Four spacers are recommended to be used per unit area (1 m2) on each side of wall.

Model	Concrete coating	Rebar thickness	Quantity in box
Wheelfix 30	30 mm	8-12 mm	500
Wheelfix 40	40 mm	8-20 mm	400
Wheelfix 50	50 mm	8-20 mm	250
Wheelfix 50HQ	50 mm	8-20 mm	250
Wheelfix 75	75 mm	12-20 mm	100
Wheelfix 100	100 mm	10-20 mm	50



Flat Waterstop
(E)

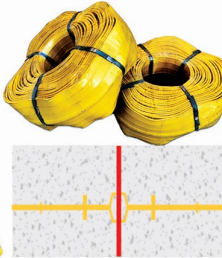


This type of waterstop is used for internal construction joints such as floors and wall joints to prevent water diffusion.

Model	Width	Thickness	Packaging
Waterstop E 15	15cm	2.5mm	25m
Waterstop E 20	20cm	3mm	25m
Waterstop E 24	24cm	3mm	25m
Waterstop E 30	30cm	3mm	25m
Waterstop E 30	30cm	4mm	25m
Waterstop E 30	30cm	5mm	25m

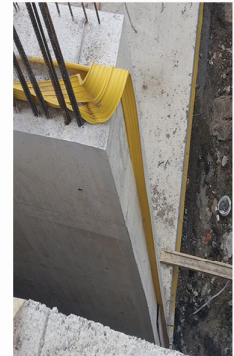


Grooved Waterstop
(O)

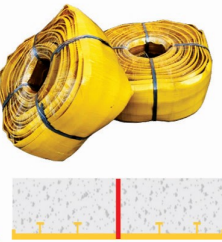


This type of waterstop is used for internal expansion joints with construction joint where there is a risk of expansion and shrinkage in the structure. The central bulb in the waterstop increases resistance against longitudinal, tensile and contraction displacements as well as hydraulic pressures.

Model	Width	Thickness	Packaging
Waterstop O 15	15cm	2.5mm	25m
Waterstop O 20	20cm	3mm	25m
Waterstop O 24	24cm	3mm	25m
Waterstop O 30	30cm	3mm	25m
Waterstop O 30	30cm	4mm	25m
Waterstop O 40	40cm	5mm	25m

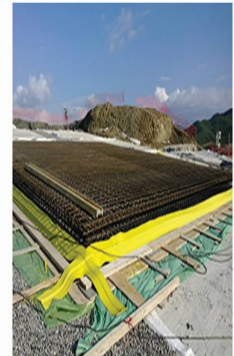


Flat Floor waterstop
(EF)

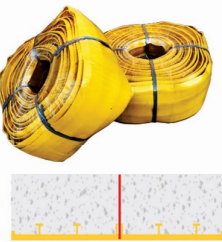


This type of waterstop is used for external construction joints on concrete except for floor of water structures with the aim of construction joining.

Model	Width	Thickness	Packaging
Waterstop EF 30	30cm	4mm	25m
Waterstop EF 50	50cm	5mm	25m



Grooved Floor waterstop
(OF)



This type of waterstop is used for external construction joints on concrete except for floor of water structures with the aim of construction joining.

Model	Width	Thickness	Packaging
Waterstop OF 30	30cm	4mm	25m
Waterstop OF 50	50cm	5mm	25m



